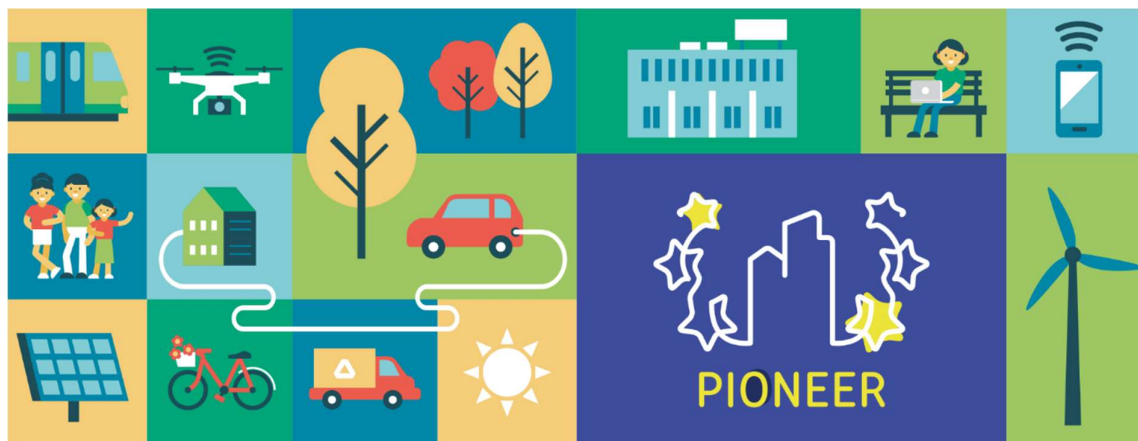


Blended Intensive Programme

Transformative Engagement: Universities Catalyzing Vulnerable Neighborhood Regeneration



**Co-funded by
the European Union**

Co-Funded by the European Union. Views and opinions expressed are however those of the author(s) only and do not necessarily reflect those of the European Union. Neither the European Union nor the granting authority can be held responsible for them.

This project is co-funded by the European Union under the Erasmus+ programme Grant Agreement n°101177236



Organisation

UHU – University of Huelva

UNI EIFFEL – Université Gustave Eiffel

ISCTE – University Institute of Lisbon

BIP ID

2023-1-ES01-KA131-HED-000113918-2

Abstract

The University of Huelva organizes a BIP focused on the role of universities in urban and rural regeneration processes, particularly in vulnerable neighborhoods. Faculty members, researchers, master's and PhD students interested in community-based research, participatory urban planning, and citizen science are welcomed to join this BIP.

As PIONEER Alliance members, this BIP promotes Challenge-Based Research and Education, fostering interdisciplinary dialogue and encouraging the development of research networks and synergies between academia and grassroots initiatives.

The program is designed as a space for co-creation and dialogue, employing participatory methodologies that ensure all partners can share their knowledge, experiences, and perspectives. A key objective is to develop a collaborative roadmap for continuing work on vulnerable neighborhoods both within the PIONEER project and with external partners.

Dates

- Virtual component: June-July 2025 (1 session the second week of June 2025, , 2 session the first week of July, to be scheduleD)
- On-site component: 23rd - 27th June 2025

The on-site component will take place in Huelva, Spain. This mobility will be organised as an Erasmus+ BIP and therefore, it is mandatory to participate in both the virtual and the on-site components.

BIP Language

English/ secondary language Spanish



Participants

Faculty members, researchers, master's and PhD students interested in community-based research, participatory urban planning, and citizen science.

An active participation of all participants is expected in collaborative and co-creative sessions using design thinking methodologies, ensuring that all participants can share their learnings, experiences, and concerns in a dynamic and interactive way.

The minimum number of participants is 15 and the maximum number of participants is 20.

Costs

The BIP has no registration fees. All activities offered in the programme are free of charge, unless otherwise specified.

Accommodation and travel costs should be borne by participants and/or their universities.

The University of Huelva has a new student residence on campus where accommodation and full board from Monday to Friday costs 55 euros a day. <https://www.uhu.es/alojamiento/residencia-universitaria>

Collaborative Approach

All sessions will be co-facilitated by faculty members from the three participating universities (University of Huelva, Gustave Eiffel University, and ICSTE) jointly with other participants who want to assume this role. However, rather than traditional presentations, the program is designed as a space for co-creation and dialogue on the proposed themes.

Each session will employ participatory methodologies that ensure all partners can share their knowledge, experiences, and perspectives. This approach reflects our commitment to horizontal knowledge exchange and collective intelligence building.

A key objective of the BIP is to develop a collaborative roadmap for continuing our work on vulnerable neighborhoods both within the PIONEER project and with external partners. The final day will be dedicated to collectively creating this roadmap, defining concrete actions, responsibilities, and timelines for our future collaboration.

Programme

VIRTUAL COMPONENT (On line June-July 2025)



KICK-OFF SESSION: Urban Regeneration, Citizen Participation and Preparation for On-site Component (2 hours, second week of June 2025):

10:00-12:00: On line-Zoom

The preparatory session will set the stage for the on-site activities, ensuring participants are aligned with the goals and methodologies of the BIP. It will begin with a welcoming introduction to foster group cohesion, followed by an overview of the transformative roles that universities can play in community-based regeneration initiatives. Participants will be encouraged to share their initial reflections and expectations. It will conclude by collaboratively defining objectives and guidelines for maximizing the effectiveness of the upcoming mobility experience in Huelva.

BUILDING SESSION: Urban Regeneration, Citizen Participation and Recap after On-site Component (2 hours, first week of July 2025):

10:00-12:00:

Following the week in Huelva, the follow-up session will focus on consolidating insights and learnings gained during the on-site program. Participants will collaboratively reflect on their experiences, sharing key takeaways from interactions with local communities and stakeholders. Emphasis will be placed on distilling best practices and lessons learned about universities' roles in catalyzing community-driven urban and rural transformations. The session will culminate in the collective articulation of a clear roadmap, outlining actionable steps, roles, and responsibilities for sustained future collaboration, emphasizing concrete research projects and cross-institutional partnerships to maintain momentum generated by the BIP.

ON-SITE COMPONENT (Huelva, 23rd - 27th June 2025)

MONDAY, 23rd JUNE - District 5 of Huelva

- 08:30, Registration and Welcome Coffee, Facultad de Trabajo Social, UHU
- 09:00, Welcome speech and Introduction, Sala de Grados
- 09:30, Keynote: "Universities as Agents of Territorial Transformation", Expert in Urban Regeneration (TBC)
- 10:30, Coffee break
- 11:00, Community visit to District 5 of Huelva and Presentation of the Integrated Plan
- 12:30, Discussion with local actors on strategies for urban regeneration
- 13:30, Networking Lunch
- 18:30 Visit to the Urban Space Project in Parque Alonso Sánchez
- 20:00, Optional Welcome Dinner (at participants' expense)

TUESDAY, 24th JUNE - Hinojales Town Hall

- 08:00, Departure to Hinojales



- 10:00, Arrival and welcome at Hinojales Town Hall
- 10:15, Presentation of rural regeneration and community-based tourism initiatives
- 11:15, Coffee break
- 11:45, Field visit to local projects and exchange with local stakeholders
- 13:30, Networking Lunch with local stakeholders
- Free afternoon with optional cultural activities

WEDNESDAY, 25th JUNE - Isla Cristina Town Hall

- 08:30, Departure to Isla Cristina
- 09:30, Arrival and welcome at Isla Cristina Town Hall
- 09:45, Presentation on participatory urban development policies
- 10:45, Coffee break
- 11:15, Field visit to local community initiatives
- 12:30, Reflection session on governance and citizen participation
- 13:30, Networking Lunch with local stakeholders
- Free afternoon for individual exploration

THURSDAY, 26th JUNE - University of Huelva Workshop

- 09:00, Workshop on Challenge-Based Education (CBE): Theoretical framework and Practical applications
- 10:30, Coffee break
- 11:00, Reflection on university roles in participatory planning and knowledge co-creation
- 12:00, Collaborative group activities developing methodological approaches based on CBE principles
- 13:30, Networking Lunch
- Free afternoon for teamwork or cultural activities

FRIDAY, 27th JUNE - Workshop on Conclusions and Shared Methodologies

- 09:00, Workshop on consolidating international research networks
- 10:30, Coffee break
- 11:00, Co-creation of the roadmap for future collaboration on vulnerable neighborhoods
- 12:30, Closing ceremony and certificates
- 13:30, Farewell Lunch
- Free afternoon for departures