

iscte

INSTITUTO  
UNIVERSITÁRIO  
DE LISBOA

# Carbon Footprint 2023

Iscte-Lisbon Campus

Version 1, 2024



FUNDO  
AMBIENTAL



REPÚBLICA  
PORTUGUESA



Financiado pela  
União Europeia  
NextGenerationEU



# Index

This document presents the results of monitoring the 2023 Carbon Footprint of the Iscte-Lisbon Campus.

The Carbon Footprint Document is a management tool for the institution and is also intended to report its results to its Stakeholders.

The figures presented were calculated according to The Greenhouse Gas Protocol methodology, and using calculation elements appropriate to the Portuguese reality.

**1.**  
Summary

**2.**  
Carbon  
Footprint

**3.**  
Carbon  
Footprint 2023

**4.**  
Consumption  
Resources

**5.**  
About the  
Document



## Summary



# 01



# Sustainability Policy

8 key ideas

 [More information](#)



**Involve**,  
the Iscte community  
in an **inclusive** and  
**Participatory** manner.



**Manage**  
the aspects of social  
responsibility and their  
impact.



**Create, transmit** and **share**  
academic knowledge with  
positive impact on the  
environment,  
in Society and the Economy.



**Comply**  
legal and other requirements  
applicable to the different  
dimensions of Sustainability.



**Making** environmental  
protection a **strategic  
objective**.



**Continuously improve** Iscte's  
sustainable performance.



**Reduce**  
resource utilisation and  
waste generation  
and emissions.



**Continuous improvement**  
of SIGQ-Iscte.

# ISCTE Sustainability Plan for 2022-2025

## 7 Lines of Action (LA)

LA1 - Teaching-learning and research

LA2 - Interaction with society

LA3 - Communication and involvement with stakeholders

LA4 - Responsible institution

LA5 - Equality, diversity and inclusion

LA6 - Health, safety and well-being

LA7 - Resource efficiency

- ISCTE's Equality, Diversity and Inclusion Plan (2022-2025)
- Eco.Ap Efficiency Plan 2030 (2022-2024)





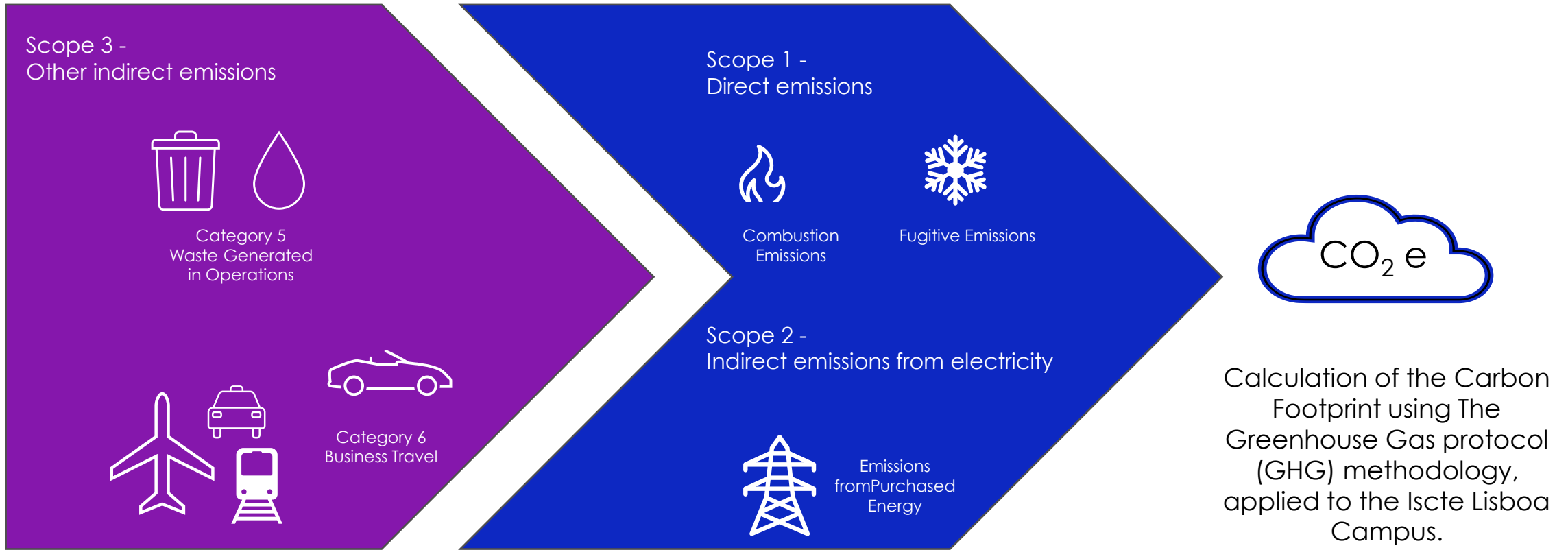
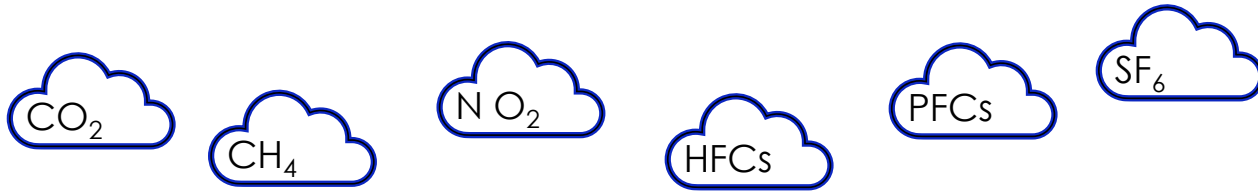
# Iscte's Carbon Footprint



# 02

# Iscte's Carbon Footprint

2019 - 2023



Supply chain

Iscte's own activity

Calculation of the Carbon Footprint using The Greenhouse Gas protocol (GHG) methodology, applied to the Iscte Lisboa Campus.





# Carbon Footprint 2023



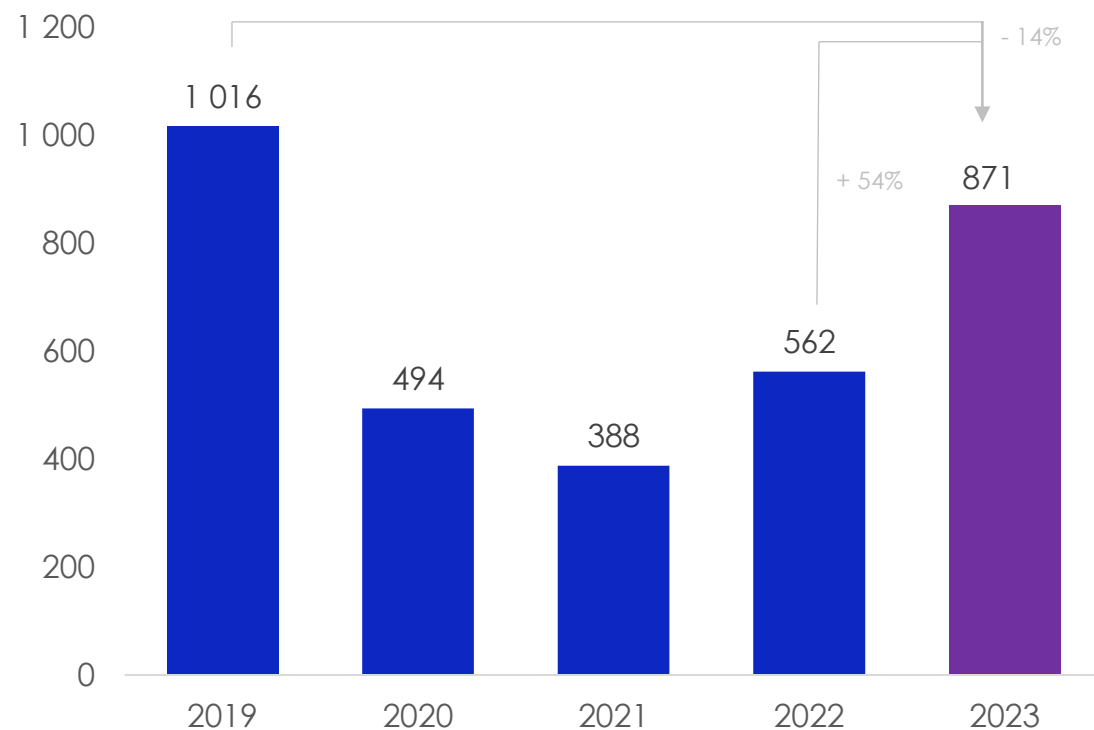
# 03

# Carbon Footprint

2019 - 2023

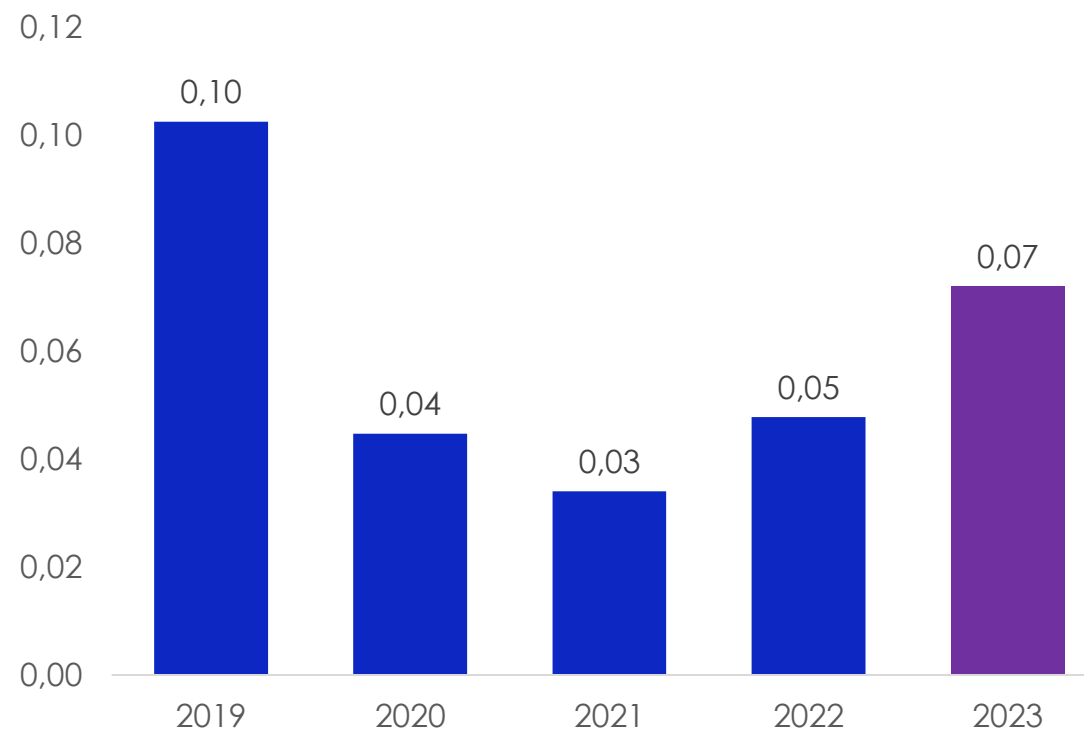


Iscte-Lisbon Campus Carbon Footprint, 2023



**Figure 1:** Iscte-Lisbon Campus Carbon Footprint in tCO<sub>2</sub> equivalent, between 2019 (base year) and 2023.

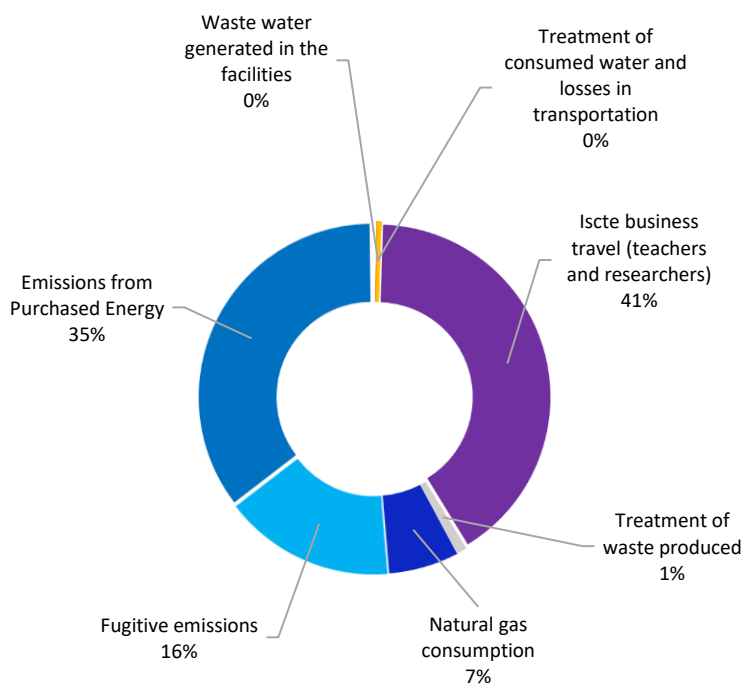
CO<sub>2</sub>e per student



**Figure 2 -** Emissions of tCO<sub>2</sub> equivalent per student between 2019 (base year) and 2023.

# Carbon Footprint

## Iscte-Lisbon Campus Carbon Footprint by emission source, year 2023



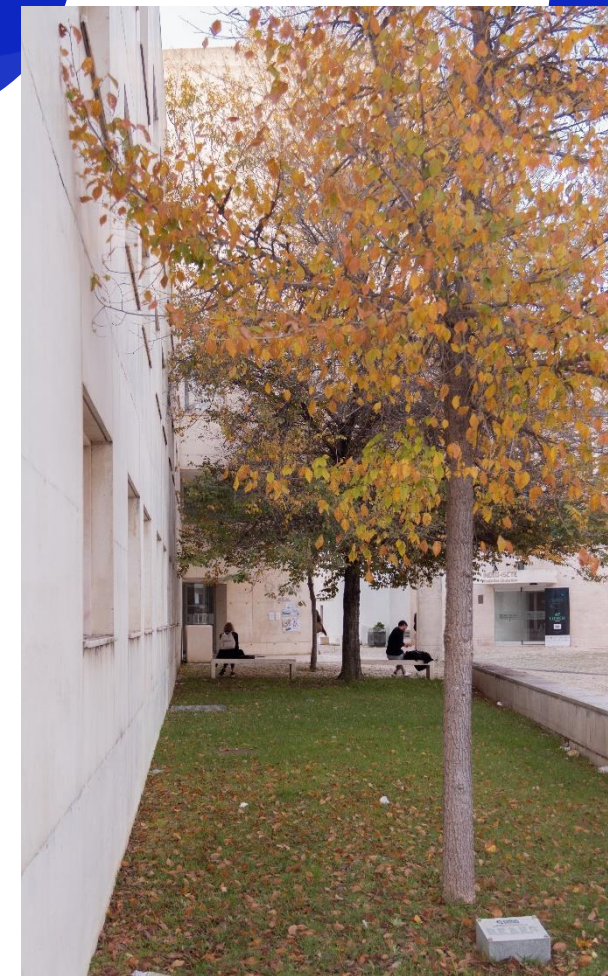
**Figure 3:** Iscte-Lisbon Campus Carbon Footprint, by source in 2023

In 2023 the reduction in energy, gas, water and waste production reduced the total Carbon Footprint of Iscte-Lisbon Campus by - 14 % compared to 2019, the base year.

However, there has been an increase in business travel, especially by aeroplane outside Europe, bus and the service car.

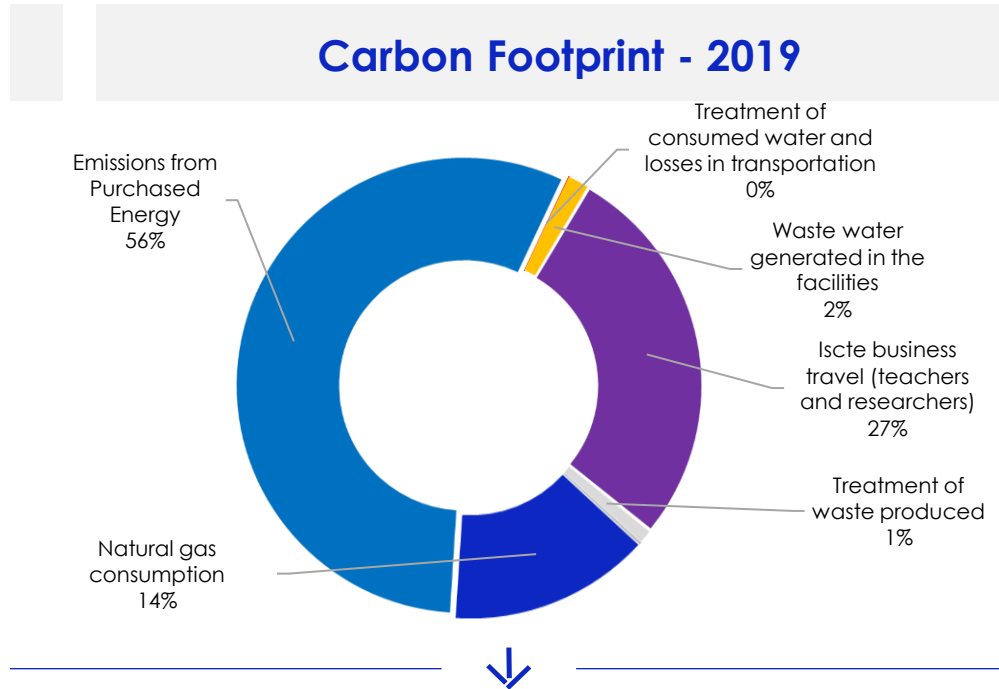
The increase in the use of fluorinated gases in equipment at Iscte is due to the remodelling of building 4.

Between 2019 and 2023, emissions per student fell by - 30 %.

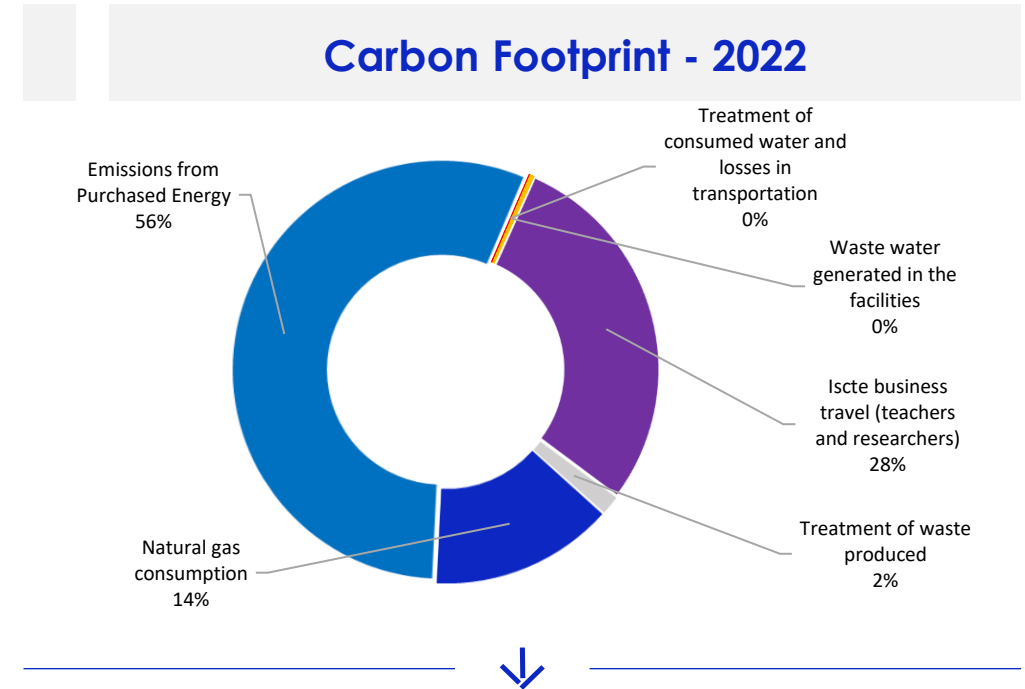


# Carbon Footprint

Iscte- Lisbon Carbon Footprint by emission source, 2019 and 2022



**Figure 4:** Iscte-Lisbon Campus Carbon Footprint, by source in 2019



**Figure 5:** Iscte-Lisbon Campus Carbon Footprint, by source in 2022



# Resource Consumption



# 04

# Resource Consumption at the ISCTE Lisbon Campus

	Uni	2019 (base year)	2020	2021	2022	2023	Δ' 19-23 (%)
Natural gas consumption	Kwh	706 928,51	499 037,73	308 630,71	388 843,40	276 869,49	-60,84%
Fugitive emissions	Kg	0	0	0,85	0	150	+100%
Electricity consumption	kwh	2 545 938	1 875 362	1 900 060	2 069 598	2 030 986	-20,22%
business travel	pkm	1 612 338,44	268 874,72	148 027,22	954 655,87	1 612 487,34	+0,03%
Air travel to Europe	pkm	657 489,55	146 715,17	95 825,44	479 373,05	653 983,27	-0,5%
Air travel out of Europe	pkm	878 963,37	100 470,95	42 280,58	421 218,33	861 187,79	-2%
Rail ravel	pkm	35 520,12	12 401,68	1 609,95	24 580,97	26 524,05	-25,32%
Employee-owned vehicles	pkm	38 819,28	7 869,47	8 311,25	26 842,36	43 532,46	+12,14%
Bus travel	pkm	1 546,12	1 417,45	-	2 641,16	9 256,77	+498%
Rental car	pkm	0	0	0	0	18 030	+100%
Water consumption	m <sup>3</sup>	23 598,13	15 914,18	10 168,00	8 605,00	10 087,00	- 57%
Waste production	t	486,30	545,04	408,53	407,75	460,00	-5%



## About the document



05

# About this report

This document presents the results of monitoring the carbon footprint of ISCTE - Instituto Universitário de Lisboa for the year 2023.

The Carbon Footprint Document is a management tool for the institution and is also intended to report the results to its stakeholders.

## Methodology

The figures presented were calculated according to The Greenhouse Gas Protocol, and using calculation elements appropriate to the Portuguese reality.

## Information verification

The information contained in the Document has not been subject to external verification by an independent entity.

## Development and coordination

Quality Unit

## More info

Carla Farelo  
Sustainability Manager  
[sustentabilidade@iscte-iul.pt](mailto:sustentabilidade@iscte-iul.pt)





eiic  
eie

iscte

INSTITUTO  
UNIVERSITÁRIO  
DE LISBOA

st