

# **Sustainability highlights**

## **2017**

# CONTENT

**01 Campus and facilities**

**02 Social responsibility and sustainability**

**03 Research on Sustainable Development Goals (SDG)**

**04 Cross-sectoral dialogue**

**05 Collaborations and outreach**

# ISCTE-IUL campus and facilities



## UNIVERSITY CAMPUS

ISCTE-IUL is strategically located in the centre of Lisbon.

The ISCTE-IUL campus offers a wonderful atmosphere and facilities which include four buildings (45.000 m<sup>2</sup>), one of which, Building II, opened in 2003 and received the Valmor Prize, Portugal's foremost award for architectural excellence.

Access to the campus is free and citizens can use our green spaces and most facilities.

**geral@iscte-iul.pt**



## UNIVERSITY LIBRARY

The ISCTE-IUL Library is linked to all departments and schools in the scientific areas of teaching and research.

Students also have free remote access to excellent online bibliographical tools, such as the Online Library of Knowledge (over 28,000 full-text scientific articles), Web of Science, SCOPUS, ABI/Inform Complete, JSTOR, Business Source Complete, Hospitality and Tourism, PsycInfo, PsycArticles, Academic Search Complete, among others.

**biblioteca@iscte-iul.pt**



## UNIVERSITY HALL OF RESIDENCE

The Professor José Pinto Peixoto Hall of Residence meets the needs of students and lecturers.

It is located in the 16th-century Santos-o-Novo Monastery, which is a national monument. It stands on a hill overlooking the River Tagus in the eastern part of Lisbon, and commands a magnificent view.

**residencia@iscte-iul.pt**



## HEALTH AND WELLBEING

ISCTE-IUL has different spaces and groups dedicated to promote culture, art and sports. It has a fitness track, a court for handball and 5- and 7-a-side football and a multi-purpose gym.

Quality of life on campus is also the responsibility of a clinic (run by SAMS) offering several medical specialties as well as nursing and diagnostic tests and exams.

## ISCTE-IUL abides by ethical, responsible and sustainable values and principles.

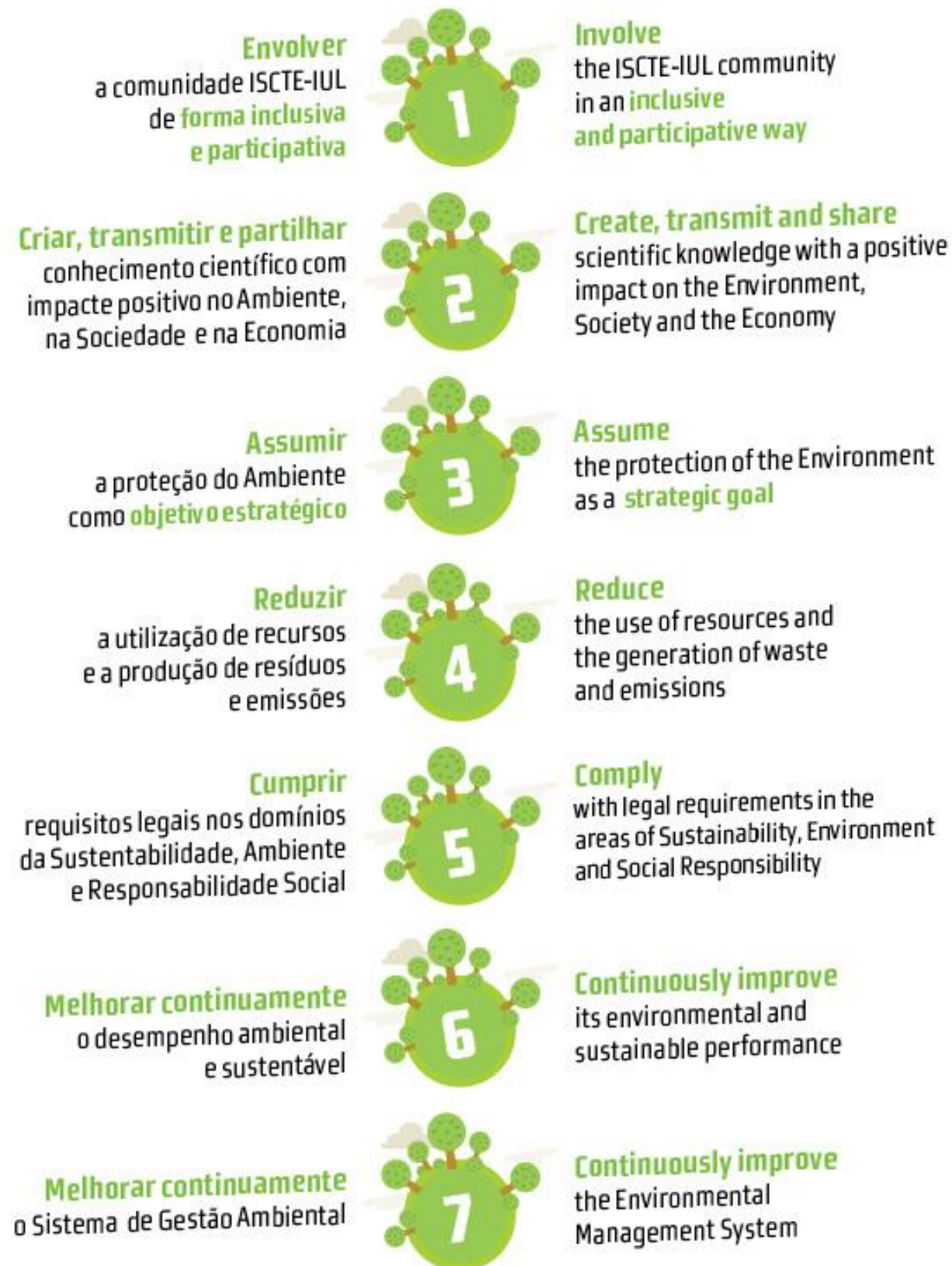
The main values in its institutional culture are freedom, diversity, democracy, equality, honesty and integrity. It also takes account of the impact of its decisions and activities on its own community and society as a whole. This includes a concern for equality and social justice, as well as the environment in all its dimensions.

ISCTE-IUL's institutional, social, environmental and economic sustainability is central to its strategy and is considered in management, education, research and knowledge transfer to society.

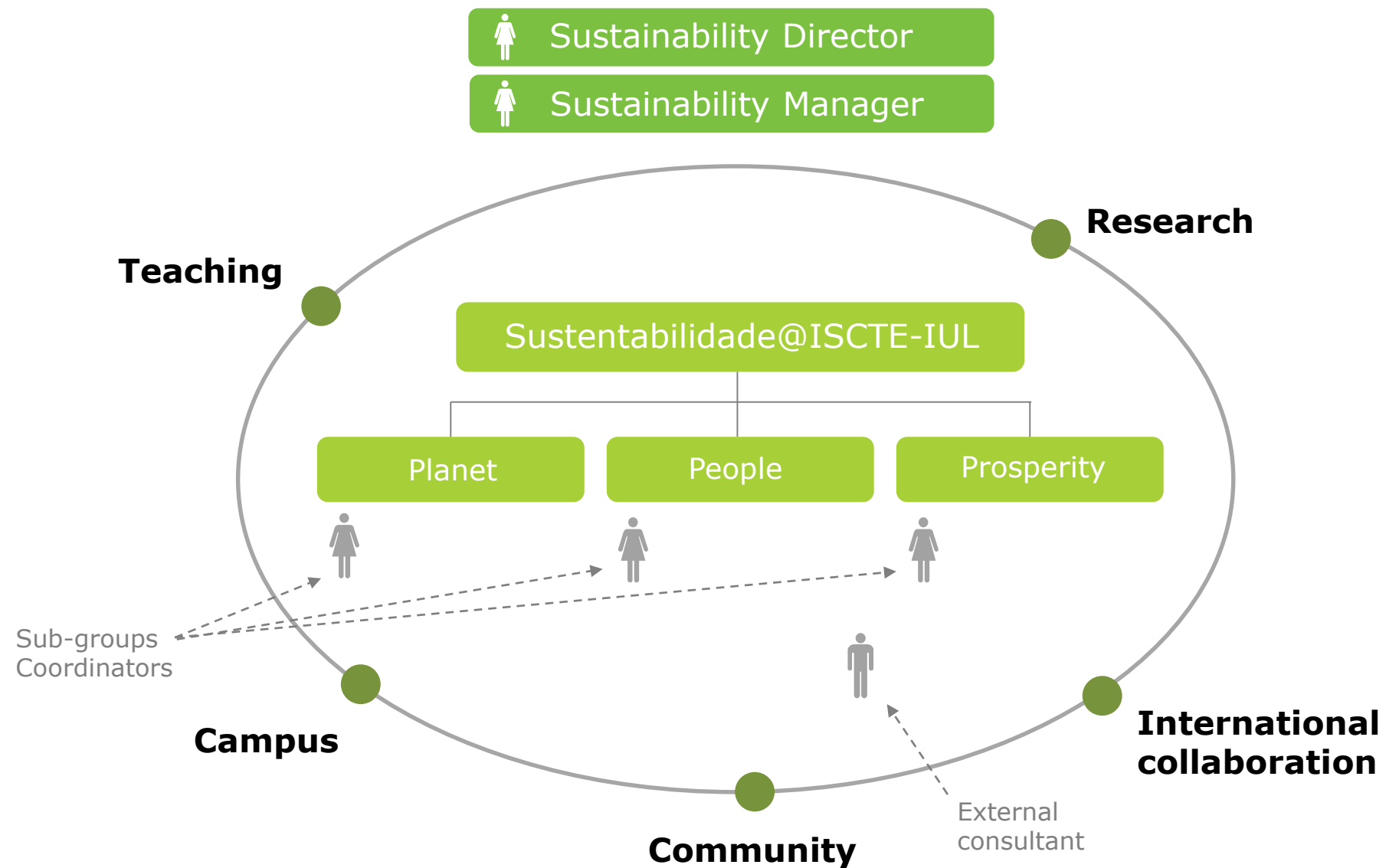




# ISCTE-IUL Sustainability Policy



# Governance for sustainability







# ISCTE-IUL Energy Efficiency Project

---

The Energy Efficiency Project was developed for the Operational Program for Sustainability and Efficiency in the Use of Resources (POSEUR), submitted and approved in 2017, with a total investment of 2.007.426€ and a contribution from the Cohesion Fund of the European Union of 1.793.114€.

The project will be implemented over the next two years, with an annual saving of 37% in final energy, 29% in primary energy and 31% in carbon dioxide emissions.

Cofinanciado por:



UNIÃO EUROPEIA  
Fundo de Coesão



## Our commitment with Sustainable Development Goals (SDG)

---

In accordance with the United Nations 2030 Agenda for Sustainable Development, we consider the [Sustainable Development Goals](#) (SDG) fundamental to eradicate poverty, protect the environment and promote prosperity and well-being for all by 2030.

ISCTE-IUL, within the scope of its Sustainability Policy, recognises its responsibility as a higher education institution that intends to contribute actively to the SDG.

Main goals for 2018-2021:

- **Teaching:** promote the integration of sustainability contents in Curricular Units in the three study cycles;
- **Research:** increase research activity directed towards the achievement of the Sustainable Development Goals.

In order to track our contributions to tackle the SDG, we have developed a tool where academic staff can identify the relevant SDG for their classes and research.



# New tool developed at ISCTE-IUL to categorise publications and projects according to the SDG



N.º de publicações: 26  
Nr. Projetos: 5



N.º de publicações: 4  
Nr. Projetos: 1



N.º de publicações: 168  
Nr. Projetos: 62



N.º de publicações: 157  
Nr. Projetos: 172



N.º de publicações: 102  
Nr. Projetos: 26



N.º de publicações: 24  
Nr. Projetos: 3



N.º de publicações: 28  
Nr. Projetos: 10



N.º de publicações: 193  
Nr. Projetos: 71



N.º de publicações: 205  
Nr. Projetos: 31



N.º de publicações: 227  
Nr. Projetos: 119



N.º de publicações: 161  
Nr. Projetos: 15



N.º de publicações: 98  
Nr. Projetos: 3



N.º de publicações: 48  
Nr. Projetos: 11



N.º de publicações: 9  
Nr. Projetos: 3



N.º de publicações: 16  
Nr. Projetos: 6



N.º de publicações: 176  
Nr. Projetos: 81



N.º de publicações: 29  
Nr. Projetos: 1

Explore this new tool at: <https://ciencia.iscte-iul.pt/sustainable-development-goals>

## Research impact

---

ISCTE-IUL collaborates with leading national and international universities and research networks, as well as with public, private and third sector organizations.

Many of our alumni work in the top management of private companies or occupy positions in local or central government and contribute to public debates in society.

Research impact is recognized, each year, through Scientific Awards that distinguish excellent scientific publications by professors and researchers.

ISCTE-IUL also organizes a [research week](#) to promote activities aimed at social recognition of science and extension of scientific culture to the general public.

## Research Units

---

**ISCTE-IUL has eight units performing high-quality research, recognised in periodical assessments by Foundation of Science and Technology (FCT).**

- **BRU-IUL**, Business Research Unit.
- **CEI-IUL**, Center for International Studies.
- **CIES-IUL**, Center for Research and Studies in Sociology.
- **CIS-IUL**, Center for Psychological Research and Social Intervention.
- **CRIA-IUL**, Centre for Research in Anthropology.
- **Dinâmia/CET-IUL**, Centre for Socioeconomic and Territorial Studies.
- **ISTAR-IUL**, Information Sciences, Technologies and Architecture Research Center.
- **IT-IUL**, Instituto de Telecomunicações Branch.

## Highlight

SPLACH aims to produce a comprehensive and coherent body of transformative planning policies, implementation mechanisms, planning models and decision support systems, able to guide Portuguese planning practice, including the public and the private sectors, towards a rapid and effective transition to a low carbon and social inclusive urban system.

*The project will run from 2016 to 2019.*



# Policy development and research

## SPLACH | Spatial Planning for Change

Planning can, and should, constitute a transformative device in our cities in Europe and elsewhere, particularly in the present times and with a view into the long term. Indeed, current changes seem far more deep within the existing urban tissues experiencing profound recompositions of functions and activities, than in physical terms, strictly speaking, where past investments in infrastructures and in the built environment seemed to have exceeded the real demand and generated a surplus of the building stock that, some years later, still remains partially empty or underused.

The Spatial Planning for Change (SPLACH) programme draws on some of the main areas of knowledge of three research centres CITTA, DINÂMIA'CET-IUL and GOVCOPP. Two to three main areas of knowledge were identified for each centre: post carbon cities, transformative policies, spatial planning, socio-technical system, food security, services of general interest, tourism and modelling. Based on these areas and on the research strategy of each centre, seven join Projects (or Work Packages/WP) were identified: contemporary spatial dynamics, transition paths, food security and sustainability, urban metabolism, sustainable tourism, planning services of general interest in times of austerity and, finally, the potential of transformation of public policies.

The development of three of these WP will be supported by an eight WP on urban modelling. One of the main goals of SPLACH is the production of a comprehensive and coherent body of development control and transformative planning policies, implementation mechanisms, planning models and decision support systems, able to feed and guide Portuguese planning practice including the public and the private sectors and the plan making and the licensing stages towards a rapid and effective transition to a low carbon and social inclusive urban system.

More information: [DINÂMIA'CET-IUL](#)

## Highlight

In January 2017, ISCTE-IUL joined the collaborative network ORSIES - Observatory of Social Responsibility and Institutions of Higher Education.

ISCTE-IUL is part of the Advisory Board for the development of the Green Paper on Social Responsibility and Institutions of Higher Education.

## Policy development and research

### ISCTE-IUL faz parte do Conselho Consultivo para a elaboração do Livro Verde sobre a Responsabilidade Social e Instituições de Ensino Superior

Em 2017, o ISCTE-IUL aderiu ao Observatório de Responsabilidade Social e Instituições de Ensino Superior (ORSIES), que tem por objetivo a criação de uma plataforma que promova o debate sobre a responsabilidade social no Ensino Superior e a partilha de boas práticas das instituições. O projeto foi lançado em 2017 pela Fórum Estudante, em parceria com a Secretaria de Estado da Ciência, Tecnologia e Ensino Superior e conta com cerca de 40 representantes de Instituições de Ensino Superior nacionais, públicas e privadas.

More information: [ORSIES](#)

Note: This content is only available in Portuguese.





## Highlight

ISCTE researchers provided support to Cresaçor - Microcredit Agency for the Azores islands - in an evaluation of the Inclusive Entrepreneurship and Microcredit policy.

*The project ran from 2015 to 2017.*



# Policy development and research

## Evaluation of the Microcredit Policy Measure in the Autonomous Region of the Azores

Cresaçor (Cooperativa Regional de Economia Solidária, CRL), as Microcredit Agency for the Region of the Azores, developed an evaluation study of the policy measure Microcredit known as Inclusive Entrepreneurship and Microcredit in the Autonomous Region of the Azores. Beyond the evaluation of this policy measure, the study developed also a self-evaluation exercise concerning the role of the Agency in implementing the policy measure. Dinâmia-CET supported this evaluation and self-evaluation exercises.

Concerning policy recommendations the study stressed:

- distinguishing four phases for implementing the measure (animation, 'skills balance', business plan and access to finance)
- widening support measures to potential mothers facilitating entrepreneurship among women and developing awareness and spreading information about the policy measure among relevant organizations
- increase the role of local governments in facilitating formal procedures and access to space.

More information: [DINÂMIA'CET-IUL](#)

## Highlight

An innovative guide was developed to identify, organize and deepen a set of professional guidelines to support LGBT victims of domestic violence.

*Presentation: March 2017*



# Policy development and research

## “Violência doméstica: boas práticas no apoio a vítimas LGBT”

No dia 1 de março de 2017, em Lisboa, teve lugar a apresentação pública da nova publicação editada pela Comissão para a Cidadania e a igualdade de Género (CIG).

Resultando de um trabalho de investigação coordenado entre a CIG e o Centro de Investigação e Intervenção Social do ISCTE – Instituto Universitário de Lisboa e tendo como enquadramento o V Plano Nacional de Prevenção e Combate à Violência Doméstica e de Género, a publicação deste guia constitui uma etapa importante de um processo iniciado há alguns anos e emerge, entre outras, da constatação de que os e as profissionais que, quotidianamente, estão na primeira linha de atendimento a vítimas de violência de género, sobretudo doméstica, necessitam de formação especializada sobre as especificidades da violência que atinge pessoas LGBT e sobre os desafios – pessoais e profissionais – que estas especificidades acarretam.

Este guia – inovador no panorama nacional – pretende, assim, identificar, sistematizar e, em algumas matérias, aprofundar, um conjunto de conhecimentos fundamentais e de linhas orientadoras para prática profissional com população LGBT vítima de violência nas relações de intimidade.

More information: [CIG](#)

Note: This content is only available in Portuguese.

# Policy development and research

## Highlight

Based on the Barometer of People in a Vulnerable Situation of the city of Lisbon, three sets of interviews were implemented to follow up on the same group of people through time.

*The project ran from 2016 to 2017.*

## Barometer of People in a Vulnerable Situation - III (2016-2017)

A team has been conducting, since 2011, a longitudinal study, with a qualitative approach – Barometer of People in a Vulnerable Situation – within the framework of the Fight Against Poverty in the City of Lisbon Observatory, promoted by EAPNPortugal.

With three sets of interviews it was possible to follow up on the same group of people in a vulnerable situation through time, meeting the research goals, specifically:

- detecting vulnerability processes concerning different poverty profiles and their repercussions in the life path;
- analysing individual resources and activation provisions aimed to building economic and living autonomy;
- and evaluating the impact of socioeconomic, political and institutional dimensions underlying resource production and the opportunities granted to subjects.

Interviewee selection criteria were based on two axes: vulnerability profiles that other studies had shown to predominate in the city of Lisbon with a view of grasping the diversity of situations and evaluating the impact of social policies in terms of vulnerability situations characteristics; and the territorial axis, where two areas in Lisbon were identified due to the higher socioeconomic indexes and differing in terms of youth/aging index and type of housing.

More information: [DINÂMIA'CET-IUL](#) e [EAPN](#)



## Highlight

This is a four-year project that will study European experiences that promote the health of communities and at the same time are environmentally sustainable.

The consortium is led by the non-governmental Belgian organization EuroHealthNet and has the scientific coordination of University College London.

*The project will run from 2016 to 2019.*



# Policy development and research

## INHERIT - INter-sectoral Health Environment Research for InnovaTions

The Centre for Psychological Research and Social Intervention in ISCTE – Instituto Universitário de Lisboa, is one of the partners in "Inherit", an international project that was awarded in August 6 million euros of European funds Horizon 2020 to study good practices to simultaneously defend health and the environment.

The consortium is led by the non-governmental Belgian organization EuroHealthNet and has the scientific coordination of University College London, where Michael Marmot, professor of epidemiology and the public health is a worldwide reference in the field of health inequalities. The project is coordinated in CIS-IUL by Sibila Marques and Maria Luisa Lima and researchers Cristina Godinho and Sílvia Luis are part of the team.

It is a four-year project that will study European experiences that promote the health of communities and at the same time are environmentally sustainable. The Re-Food movement, launched in the Lisbon area, and social gardens that bloom throughout Portugal are some of the most interesting cases considered to be studied and replicated in other countries.

More information: [INHERIT](#) e [CIS-IUL](#)



## Highlight

This project aimed to evaluate the intervention of Portuguese cooperation in the Education Sector in the Republic of Guinea-Bissau.

There was an external evaluation, carried out after the interventions were completed, to present the main results in the areas of action, identification of learned lessons and good practices, and to promote accountability, transparency and dissemination of results.

*Final publication: July 2017*



# Providing expert advice

---

## External Evaluation to the Intervention of Portuguese Cooperation on Education Sector

**Pre-school, elementary school, high school**

The purpose of this evaluation is the intervention of Portuguese cooperation in the Education Sector, in the areas of Pre-primary Education, Basic Education (including the training component of educational agents) and Secondary education in the Republic of Guinea-Bissau, in the period between September 2009 and August 2016.

This was an external evaluation, carried out after the interventions were completed, to present the main results of the interventions in the areas of action, identification of learned lessons and good practices, and to promote accountability, transparency and dissemination of results.

The present report is a final, summative evaluation of the intervention of Portuguese cooperation in Education (Early Childhood Education, Basic Education and Secondary Education) in Guinea-Bissau in the period 2009-2016.

More information: [Instituto Camões](#) e [CEI-IUL](#)

## Highlight

This project focused on cultural activities in Lisbon. Working with the Lisbon Municipality, a participatory process for reflection and strategic planning was developed and a set of recommendations was prepared

*The project ran from 2016 to 2017.*



## Providing expert advice

---

### **CULTURE LX | Strategic definition and reflection on the cultural sector in Lisbon**

Definition and strategic reflection on the cultural sector in Lisbon, with a diagnostic component and a concrete definition of strategic lines of action, within the framework of a new planning cycle, within the scope of the direct adjustment pre-contractual procedure launched by the City Council of Lisbon (CML).

In this context, it is intended to promote and foster a participatory process of reflection and strategic planning on the cultural sector in Lisbon, based on an analysis and diagnosis on the conditions of cultural provision and enjoyment in the city, its main resources and assets and its main dynamics.

The work with a diagnostic component (combining the detailed analysis of much existing information with a broad auscultation of the cultural agents) and a component of definition of strategic lines of action, with the associated discussion with the CML and the main cultural agents of the county and with the implementation of a set of action lines and measures and structuring projects to be implemented at the municipal level, as well as a system of monitoring the action recommended.

More information: [DINÂMIA'CET-IUL](#)

# Cross-sectoral dialogue

## Highlight

This conference aims to discuss major trends that are transforming mobility and highlight future challenges to this sector. Businesses also have the opportunity to present their new mobility services and solutions to address current challenges.

## Conferência sobre mobilidade – ISCTE-IUL e Brisa (2017)

O *Mobility on the Move* 2017 decorreu a 25 de outubro, no Grande Auditório do ISCTE, em Lisboa. Na emergência de novas formas de mobilidade sustentável, este evento promoveu o debate sobre a digitalização, a revolução energética e a partilha, conceitos que estão a transformar, grosso modo, a mobilidade.

Foram, ainda, conhecidos os novos serviços e negócios de mobilidade de vários operadores nacionais, assim como a apresentação de startups que pretendem dar resposta aos crescentes desafios do setor.

Note: This content is only available in Portuguese.



CONVITE

# MOBILITY ON THE MOVE 2017

25 OUT ISCTE GRANDE AUDITÓRIO

**COMPREENDA**  
como é que a digitalização, a revolução energética e a partilha estão a transformar a mobilidade.

**CONHEÇA**  
os novos serviços e negócios de mobilidade de operadores Portugueses.

**DESCUBRA**  
a resposta das StartUps nacionais aos desafios de mobilidade.

PROGRAMA DETALHADO EM ANEXO

Confirme a sua presença até ao dia 20 de Outubro para [mobilityonthemove@unimiam.pt](mailto:mobilityonthemove@unimiam.pt) ou para Ana Simões: 213 187 924

INDEG ISCTE Projetos

FutureCast, Liberty Seguros, galp, Brisa



## PROGRAMA

**Abertura**

08h30 | Check in e Welcome coffee  
09h00 | Apresentação do evento  
**Prof. Luís Reto**  
Reitor ISCTE  
09h10 | Intervenção Presidente Brisa  
**Vasco de Mello**  
09h20 | Abertura pelo Secretário de Estado-adjunto e do Ambiente  
**Prof. José Mendes**

**11h45 | 2º Painel "Mobility in Portugal"**

**Luís D'Eça Pinheiro**  
Brisa – Ecossistema Via Verde  
**João Oliveira**  
DriveNow Lisbon  
**Rodrigo Esteves**  
Liberty – Desafios para a Indústria dos Seguros  
**João Torneiro**  
Galp – Perspetiva Galp  
**Pedro Pinto**  
EcoAltra – Mobilidade Partilhada  
13h00 | Almoço Volante

**09h40 | 1º Painel "Mobility On The Move"**

Mesa Redonda e debate com audiência  
**Profª Hélia Pereira** - Moderadora  
**Prof. José Manuel Viegas**  
Mobility Transformational Change  
**Pedro Barradas**  
Comissão Europeia – DG MOVE – A estratégia europeia para os sistemas colaborativos inteligentes de transportes;  
**Prof. José Rui Felizardo**  
CEIA – A inovação aplicada à mobilidade em Portugal  
**Bertrand Bonhomme**  
Michelin – O caso do OpenLab da Michelin  
11h15 | Coffee Break

**14h30 | 3º Painel "Mobility & StartUps"**

Abertura  
**Eduardo Ramos**  
Grow Mobility  
Elevator Pitches de StartUps (Pitches a anunciar no dia 13/10)  
16h00 | Encerramento  
**Prof. Vicente Rodrigues**  
ISCTE  
**Tiago Câmara Pestana** (a confirmar)  
Administrador Executivo Galp

## MOBILITY ON THE MOVE 2017

25 OUT ISCTE GRANDE AUDITÓRIO

COMO CHEGAR

Alameda da Cidade Universitária  
Campo Grande  
METRO  
Fosidade de Direito  
PARQUE PÚBLICO  
Biblioteca Nacional  
PARQUE PRIVATIVO  
ISCTE  
AUDITÓRIO Edifício II Piso 1  
Hospital de Santa Maria  
Av. das Forças Armadas  
Entrecampos

INDEG ISCTE Projetos

FutureCast, Liberty Seguros, galp, Brisa

# Cross-sectoral dialogue

## Highlight

During the 2017 Global Forum for Responsible Management Education in New York, ISCTE Business School engaged in the conversation about responsible management education, together with over 300 academic executives, faculty, business leaders, students, and United Nations officials.

## Principles of Responsible Management Education (PRME)

ISCTE Business School was accepted as a member of PRME on February 2011. As an institution dedicated to creating ethical, effective and holistic leaders for the 21st Century, we not only remain committed to integrating the Principles of Responsible Management Education throughout all our institutions, but hope to help lead the way in developing new ways of teaching the competencies needed in the ever-evolving, ever more complex global business environment of the 21st Century.

More information: [ISCTE Business School](#)



**In 2017, ISCTE Business School became an Advanced Member of PRME, reinforcing its commitment to teaching, research and thought leadership to advance the 2030 Agenda.**

During the 2017 Global Forum for Responsible Management Education in New York, ISCTE Business School engaged in the conversation about responsible management education, together with over 300 academic executives, faculty, business leaders, students, and United Nations officials.

This cross-sector dialog involved not only looking back at ten years of the PRME initiative, but also setting the stage for its future growth and impact.

From this event, resulted the [Outcomes Declaration](#) of the 2017 PRME Global Forum planned to be reflected in the outcomes of the United Nations High Level Political Forum on Sustainable Development.

More information: [UNPRME](#)



# Cross-sectoral dialogue

## Highlight

Several ISCTE-IUL researchers organized important conferences in 2017 for knowledge dissemination and policy support.

### 32<sup>nd</sup> European Economic Association Annual Congress

BRU-IUL researchers were part of the Local Organising Committee of the [32<sup>nd</sup> European Economic Association Annual Congress](#) in August 2017, attended by 1880 international participants.



### 14<sup>th</sup> European Conference on Psychological Assessment

BRU-IUL researchers were involved in the organization of the [14<sup>th</sup> European Conference on Psychological Assessment](#), attended by 330 participants from over 50 countries.



### Annual Portuguese Association of Energy Economics (APEEN) Conference

BRU-IUL researcher chaired in May 2017 the [Annual APEEN Conference](#), which aims at sharing experiences and results between the scientific and business community in the areas of Economics of Energy and Environment. Attended by research institutions, companies in the energy sector, regulators, competition authorities and policy makers.



# Cross-sectoral dialogue

## Highlight

The Public Policy Forum is an initiative of public policy professors and researchers from ISCTE-IUL, held annually since 2012.

The Forum aims to promote the debate of ideas, knowledge and information on public policies and contribute to improve the quality of the design, implementation, regulation and evaluation processes of public policies in Portugal.

## Os Desafios das Políticas Fiscais (2017)

**Equidade, competitividade, sustentabilidade e concorrência fiscal**

A percepção de que a política fiscal não cumpre os objetivos de equidade e de competitividade necessários à redução das desigualdades e à promoção do crescimento económico, e as novas questões relacionadas com a concorrência fiscal global, sustentabilidade ambiental e coesão territorial foram o ponto de partida para, em colaboração com o Conselho Económico e Social, analisar e debater as políticas fiscais em Portugal.

More information: [Fórum de Políticas Públicas](#)

Note: This content is only available in Portuguese.

## Forum das políticas públicas



Forum 2019



Forum 2017



Forum 2016



Forum 2015



Forum 2014



Forum 2013



Forum 2012



## Highlight

CoopMar is a network of researchers working around an agenda of “sea and society” for development by leveraging the synergies between different partners. CoopMar develops research on shared intangible resources in the Ibero-American region, to promote useful deliverables in social sustainability and heritage curation.

The final purpose of this network is to promote awareness in communities, to enhance a networked Port City sphere and to deliver new public policy options.

*The first meeting occurred in Lisbon in 2017.*



# International collaboration

## CoopMar network | 1<sup>st</sup> Meeting

CoopMar (Transoceanic Cooperation. Public Policies and Iberoamerican Sociocultural Community), a CYTED network (Iberian-American Scientific and Technological Programme for Development), has the pleasure to invite you to the public presentation ceremony of the network formed by teams of Brazil, Chile, Spain, Panamá and Portugal which will take place in July in Lisbon.

**Goals of the CoopMar Network** The CoopMar network carries out research on the humanities and public policy around an agenda of “sea and society” for development by leveraging the existent synergies between different partners. The long-term historical dynamics connected to the sea has the capacity to re-enact the collaborative potential in Ibero-America and contribute to strengthening future strategies and initiatives with mutual benefits.

Through dialogue between universities and R&D centres, public and private institutions, museums and corporate entities, CoopMar intends to contribute to the design of public policies through the involvement of communities and generate socioeconomic impact. Associating history, memory, culture and new technologies, it aims to offer specific solutions to the Iberian-American societies allying social responsibility and economic sustainability.

More information: [CoopMar](#) e [CEI-IUL](#)

## Highlight

Varieties of Democracy (V-Dem) is a new approach to conceptualizing and measuring democracy.

It is a collaboration among more than 50 scholars worldwide which is co-hosted by the Department of Political Science at the University of Gothenburg, Sweden; and the Kellogg Institute at the University of Notre Dame, USA.

*The project will run from 2014 to 2020.*



# International collaboration

## Partners of V-Dem network

Varieties of Democracy (V-Dem) is a new approach to conceptualizing and measuring democracy. We provide a multidimensional and disaggregated dataset that reflects the complexity of the concept of democracy as a system of rule that goes beyond the simple presence of elections.

The V-Dem project distinguishes between seven high-level principles of democracy: electoral, liberal, participatory, deliberative, egalitarian, majoritarian and consensual, and collects data to measure these principles. It is a collaboration among more than 50 scholars worldwide which is co-hosted by the Department of Political Science at the University of Gothenburg, Sweden; and the Kellogg Institute at the University of Notre Dame, USA.

With four Principal Investigators (PIs), fifteen Project Managers (PMs) with special responsibility for issue areas, more than thirty Regional Managers (RMs), 170 Country Coordinators (CCs), Research Assistants, and 2,500 Country Experts (CEs), the V-Dem project is one of the largest social science data collection projects focusing on research.

More information: [V-Dem](#) e [CEI-IUL](#)



# International collaboration

---

## Highlight

---

The AMITIE Code project is a global citizenship education and human rights education project, made of training activities targeting local authorities, secondary school teachers, youth and students. It included the participation of migrant associations in Italy, Latvia, Spain, Portugal, France and Germany.

*The project ran from 2015 to 2017.*

## AMITIE CODE – Capitalizing On DEvelopment

The Action intends to capitalize on the research, training and communication results of the AMITIE project (*Awareness raising on Migrations, developmenT and human rIghts through local partnErships*) and on the successful experiences of development cooperation between European and African cities, to ensure the commitment of European local governments and to strengthen the European citizens' engagement in the post-2015 development agenda, through informal/non-formal education and participatory visibility actions.

The focus on the migration and development nexus and on partners' experiences of cooperation between Europe and Africa intends to ensure the Action's effectiveness by linking the development objectives to the visible causes and consequences of migrations, such as climate change, human rights concerns or the demographic change in European cities.

AMITIE Code guidelines were developed in seven languages, as well as several leaflets, catalogues and teacher training information.

More information: [AMITIE](#) e [CEI-IUL](#) e [Ciência-IUL](#)



## Highlight

CARE is a collaborative project funded by the European Union to address issues related to the quality, inclusiveness, and individual, social, and economic benefits of Early Childhood Education and Care (ECEC) in Europe.

It aims to identify strategies and policy measures that are likely to receive broad support from families, professionals, and policymakers, thereby enhancing the impact of early childhood education and care.

*The project ran from 2014 to 2017.*



# International collaboration

## Project CARE - European Early Childhood Education and Care

CARE is a collaborative project funded by the European Union to address issues related to the quality, inclusiveness, and individual, social, and economic benefits of Early Childhood Education and Care (ECEC) in Europe.

The central goal of CARE is to develop an evidence-based and culture-sensitive European framework of developmental goals, quality assessment, curriculum approaches, and policy measures for improving the quality and effectiveness of early childhood education and care.

Our interdisciplinary research team will construct this framework, based on the competencies and skills that young children need to develop in current societies. We will also identify the conditions that have to be fulfilled to promote child development and wellbeing, and identify strategies and policy measures that support access to high-quality provisions.

In doing this, we hope to identify strategies and policy measures that are likely to receive broad support from families, professionals, and policymakers, thereby enhancing the impact of early childhood education and care.

CARE is a collaborative project that includes 11 partners and countries, covering all regions of Europe. The research team for this project is part of the Center for Research and Social Intervention (CIS) at ISCTE-IUL.

More information: [CARE Project](#)

## Highlight

'Let us think about the fact that women make up the majority of doctorates in most EU countries, statistics show, but are underrepresented in the research profession, the top academic career category and in charge of higher education institutions', as explains Lúcia Amâncio, researcher at CIS-IUL and coordinator of SAGE Project at ISCTE-IUL.

This project, funded by the European Commission, brings together a number of universities, and represents An Open Door for Gender Equality in higher education institutions.

*The project will run from 2016 to 2019.*



# International collaboration

## An Open Door for Gender Equality

The SAGE (Systemic Action for Gender Equality) project, funded by the European Commission, brings together a number of universities with the aim of implementing intervention plans for gender equality in higher education institutions. ISCTE-IUL is part of this consortium through Lúcia Amâncio, a researcher at CIS-IUL.

Trinity College Dublin - Trinity Centre for Gender Equality and Leadership assures the coordination of this research project, which also includes Queen's University Belfast, the International University of Sarajevo, Kadir Has University, Istanbul, Science Po Bordeaux and the University of Brescia.

Based on European policies for gender equality, the work of the SAGE team requires detailed knowledge of the reality of each country involved, defining appropriate strategies and measures. The project also foresees more comprehensive initiatives, namely the drawing up of a Charter of Principles for Equality in Higher Education which other institutions will be invited to join.

More information: [ISCTE-IUL](#) e [SAGE](#)

## Highlight

The Youth in Politics project aims to promote a global citizen mindset in Portuguese Parties' Youth wings, highlighting the need for engagement in the issues of education for development.

*The project will run from 2016 to 2018.*

## Collaborations with NGOs

### Os Jovens na Política – Participar para a Cidadania Global

O projeto “Jovens na Política – Participar para a Cidadania Global” visa a promoção da Cidadania Global nas juventudes partidárias, para que as problemáticas ligadas à Educação para o Desenvolvimento (ED) sejam integradas nos seus programas de atividade.

A médio prazo, pretende que a Cidadania Global esteja mais presente na ação dos partidos políticos, através da capacitação e mobilização de jovens militantes e simpatizantes, promovendo ações e reflexão em torno da Cidadania Global, em articulação com as dinâmicas locais.

O projeto é co-financiado pelo Camões – Instituto da Cooperação e da Língua, I.P. e tem como parceiros o Centro de Estudos Internacionais do ISCTE – IUL, o Instituto Português do Desporto e Juventude (IPDJ), o Conselho Nacional da Juventude (CNJ) e a Federação Nacional de Associações Juvenis (FNAJ).

More information: [aidglobal](#) e [CEI-IUL](#)

Note: This content is only available in Portuguese.



## Highlight

This project tackles the issue of pharmaceutical pollution in wastewater by assessing the technical, social and economic viability of using a combined filter in senior residencies. Its partners are both academics and institutions in the health sector.

*The project will run from 2016 to 2019.*



# Collaboration with health organizations

## INNOVEC'Eau

### Drug residues in discharges from old people's homes

Innovéc'Eau aims at providing a trans-territorial assessment focused on wastewater stream from elder people residencies from Sudoe area and implementing pilot technologies for drugs treatment and monitoring.

The innovative feature is based on the coupling of physic-chemical test procedure and biological test procedure for the efficient decontamination of wastewater.

Its objective is to apply a prototype at the exit of selected residencies to treat pollutants at source, before their dissolution within the urban sewage network. In another hand, they will develop assessment tools as sensors and electrochemical biosensors in order to monitor the degradability of pollutants both online and in real time.

From the socio-economic point of view, Innovéc'Eau will provide a comparative study regarding medicines prescription and awareness actions. Lastly, they will provide a joint economic viability study between France, Spain and Portugal.

More information: [INNOVEC'Eau](#)



## Highlight

- BRU worked in a project, financed by an international pharmaceutical company, to validate the brief international cognitive assessment for multiple sclerosis for Portuguese Population. The assessment is currently being used in 8 Portuguese Hospitals.
- BRU researchers developed a free of charge tool called RIAAT (Recording, Investigation and Analysis of Accidents).

*Project articles were published in 2017*



# Collaboration with health organizations

## Verbal Selective Reminding Test

BRU researchers worked in a project, financed by an international pharmaceutical company, to validate a brief international cognitive assessment, the Verbal Selective Reminding Test (VSRT), for multiple sclerosis for the Portuguese Population. The assessment is currently being used in 8 Portuguese Hospitals.

Relevant outputs:

- Neves, M. R., Sousa, C., Passos, A. M., Ferreira, A. I., & Sá, M. J. (2017). Verbal Selective Reminding Test (six-trial administration): Regression-based norms for a Portuguese version. *Applied Neuropsychology: Adult*, 1–9.
- Sousa, C. S., Neves, M. R., Passos, A. M., Ferreira, A., & Sá, M. J. (2017). Paced Auditory Serial Addition Test (PASAT 3.0 s): Demographically corrected norms for the Portuguese population. *Applied Neuropsychology: Adult*, 1–7.
- Lopes, S. L., Ferreira, A. I., Passos, A., Neves, M., Sousa, C., & Sá, M. J. (2017). Depressive symptomatology, presenteeism productivity and quality of life. *Journal of Occupational and Environmental Medicine*, 1.

## Recording, Investigation and Analysis of Accidents

BRU researchers developed a free of charge tool called RIAAT (Recording, Investigation and Analysis of Accidents) to help companies register and analyse their accident data. The project has been ongoing since 2008.

Relevant output:

- Silva, S. A., Carvalho, H., Oliveira, M. J., Fialho, T., Soares, C. G., & Jacinto, C. (2017). Organizational practices for learning with work accidents throughout their information cycle. *Safety Science*, 99, 102-114.

## Highlight

- ISCTE-IUL research centres have participated in several outreach activities throughout the year to promote science and further strengthen our impact in society.

# Outreach activities

## BECERID Project

O CIS-IUL é parceiro no projeto Europeu BECERID que visa o lançamento do blog “PrimeirosAnos.pt” e sua utilização como plataforma de aprendizagem aberta para a qualidade, inclusão e diversidade da Educação Infantil nos primeiros anos de vida. Este projeto vai decorrer de 2017 a 2020.

More information: [PrimeirosAnos](#) e [BECERID](#)



## Ciência Viva no Laboratório

All research units have participated in the programme *Ciência Viva no Laboratório – Ocupação Científica de Jovens nas férias*, receiving 4 high school students for a week. This is an educational outreach programme to promote scientific culture among youths.

Initiative took place in June 2017



## European Researchers Night

ISCTE-IUL is one of the partners of the European consortium 'European Researchers' Night', aimed at celebrating science and bringing researchers and citizens closer together.

This initiative, seeks to break the barriers that separate science from citizens and demystify the distant image that the ordinary citizen has of the scientist. It is an opportunity to disseminate the work and innovation of Portuguese researchers and highlight the importance of efficient communication between research centres and civil society.



## Highlight

This project promotes direct intervention with future professionals in different areas, incorporating a Training Guide on Female Genital Mutilation/Cutting into the curricular units of different courses at five European universities, partners in the project.

There will be 4 international seminars to promote discussion on the subject and forms of prevention among experts and stakeholders in the area.

ISCTE-IUL hold the International Seminar "Integrated Institutional Responses to FGM/C" on 28 and 29 September 2017.

*Guide published in 2017.*



## Outreach activities

### Interactive Multisectoral Academic Training e-Guide on on female genital mutilation / cutting

In a context of increasing importance of on-line academic learning, MAP-FGM has published a colourful and interactive electronic manual to expand the scope of FGM/C insertion into curricula. This manual was previously published in 6 languages by Dykinson editors and distributed among students, professors, researchers, academic libraries, etc.

The Interactive Multisectoral Academic Training e-Guide on FGM/C is a PDF document that can be easily uploaded on every university on-line learning platform and widely shared as email attachment.

This re-shaping is aimed at improving the browsing of its 2 general (introduction and in-depth understanding) and 6 sectoral chapters:

- medicine, nursing and midwifery;
- social work, education, and psychology;
- human rights, penal and asylum law;
- anthropology and international development;
- feminist and gender studies;
- communication and media.

More information: [MAP-FGM](#) e [CEI-IUL](#)

## Highlight

ISCTE-IUL has projects that aim to study our cultural heritage and preserve our history and traditions.

# Preserving knowledge and culture

## **A nossa música, o nosso mundo: Associações musicais, bandas filarmónicas e comunidades locais (1880-2018)**

Este estudo dirige-se ao saber-fazer musical que é voluntariamente tecido em associações/coletividades musicais. Tem como enfoque privilegiado as bandas filarmónicas, instituições que apesar de terem uma grande participação na vida dos portugueses ao longo de séculos, só desde o virar do século têm conquistado um continuado interesse académico.

The project will run from 2016 to 2019.

More information: [CIES-IUL](#)

Note: This content is only available in Portuguese.

## **The Portuguese National Laboratory for Civil Engineering and the History of Architecture Research**

The History of Architecture and Urbanism in Portugal updating concern through the knowledge of the 'Scientific Research in Architecture' developed in the Portuguese National Laboratory for Civil Engineering (LNEC).

The interdisciplinary lines of investigation examined in LNEC aim to assist the Government in public policies prosecution. Originally constituted to support the country in the public works development, LNEC achieved worldwide recognition, but the socioeconomic changes witnessed by LNEC had profound implications in the scientific-technological research over the years.

It is essential to evaluate systematically the importance of this public institution in the research of Architecture, knowing the history, themes and methodologies of research, participants and centers/researchers of reference, in order to contribute to the knowledge of a Cultural Heritage, archived between Engineers and developed, over the last fifty years, by Architects.

The project will run from 2017 to 2023.

More information: [DINÂMIA'CET-IUL](#)

# Main sustainability memberships and partnerships

## Memberships

---



## Partnerships

---



## Co-financed projects

---

