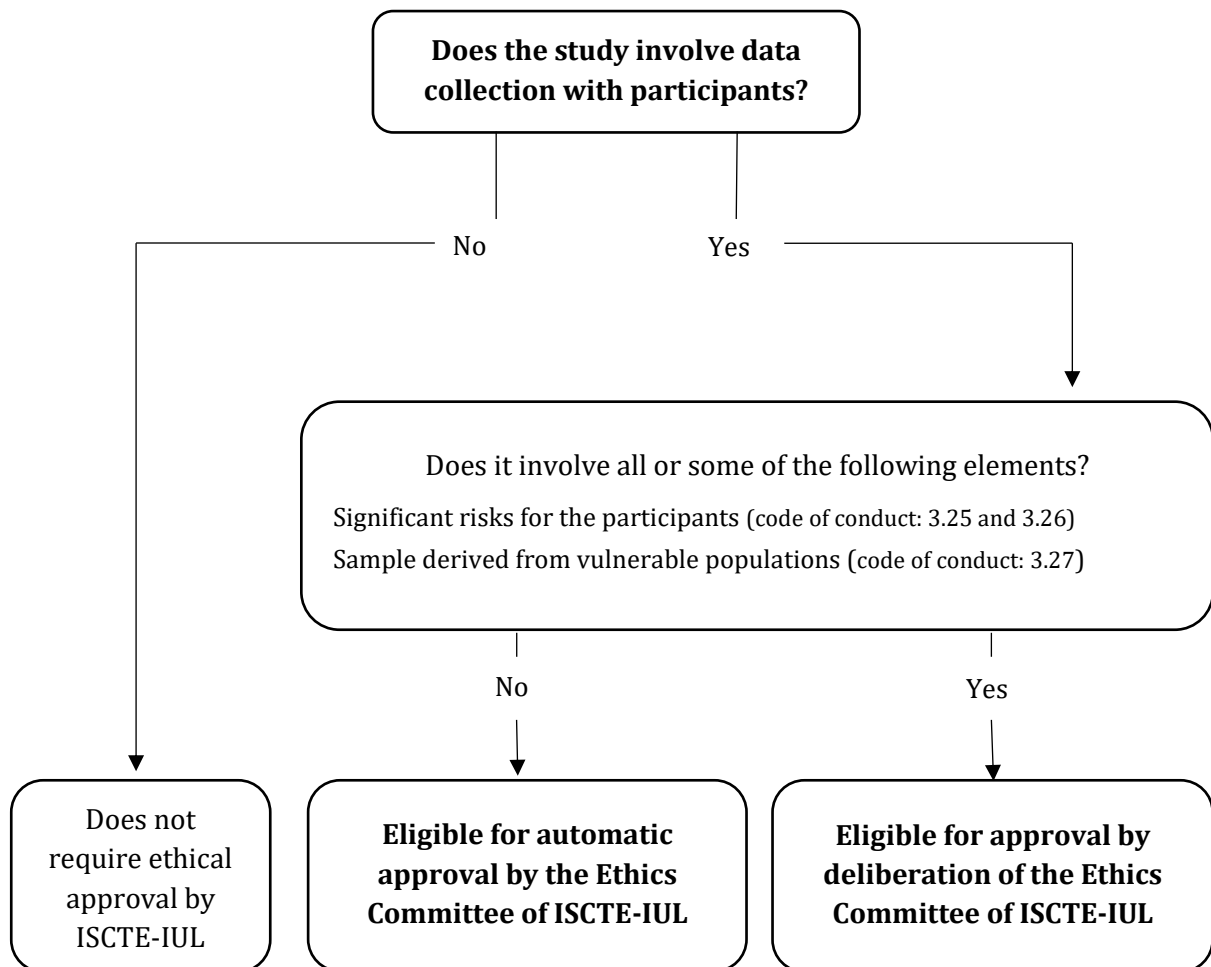


## DIAGRAM OF SUBMISSION AND ETHICAL APPROVAL AT ISCTE-IUL



### **Automatic approval by the Ethics Committee of ISCTE-IUL**

The study plan is submitted before the initiation of data collection. Complying with the criteria presented in the diagram, which will be appraised by a member of the Ethics Committee of ISCTE-IUL, the approval is automatic and conducted within a desired maximum time limit of fifteen business days.

### **Approval by deliberation by the Ethics Committee of ISCTE-IUL**

Under the approval by deliberation by the Ethics Committee of ISCTE-IUL, the study plan is submitted before the initiation of data collection and subject to appraisal and deliberation by the Committee.